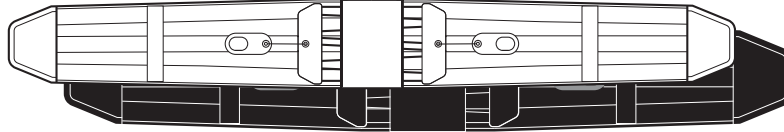


QUIKDRAW™

QuikDraw™ PRO



QuikDraw™ Extra Small

Circumference ≈ 21 - 27 in. • Men's Pant Size 22 - 26 in. • Women's Pant Size Child - 0

QuikDraw™ Small

Circumference ≈ 26 - 32 in. • Men's Pant Size 26 - 30 in. • Women's Pant Size 2 - 4

QuikDraw™ Medium

Circumference ≈ 31 - 37 in. • Men's Pant Size 30 - 34 in. • Women's Pant Size 6 - 10

QuikDraw™ Large

Circumference ≈ 36 - 42 in. • Men's Pant Size 34 - 38 in. • Women's Pant Size 12 - 16

QuikDraw™ Extra Large

Circumference ≈ 41 - 47 in. • Men's Pant Size 38 - 44 in. • Women's Pant Size 18 - 22

QuikDraw™ Extra Extra Large

Circumference ≈ 46 - 57 in. • Men's Pant Size 44 - 54 in. • Women's Pant Size 24 - 34

WHITE **BLACK**

993080 993081

993010 993011

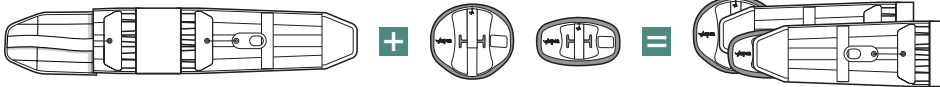
993020 993021

993030 993031

993040 993041

993090 993091

QuikDraw™ RAP Billing Matrix



QuikDraw™ PRO

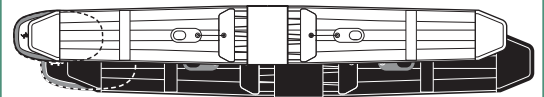
Rigid Anterior Panel (RAP)

QuikDraw™ RAP
Sadmerc Approved
Code **L0627**

Regular or Large or XL

	white	993080	+	white	993100	993101	993102	=	white	995011
XS	black	993081		black	993200	993201			black	995010
	white	993010		white	993100	993101	993102		white	995021
S	black	993011		black	993200	993201			black	995020
	white	993020		white	993100	993101	993102		white	995031
M	black	993021		black	993200	993201			black	995030
	white	993030		white	993100	993101	993102		white	995041
L	black	993031		black	993200	993201			black	995040
	white	993040		white	993100	993101	993102		white	995051
XL	black	993041		black	993200	993201			black	995050
	white	993090		white	993100	993101	993102		white	995061
XXL	black	993091		black	993200	993201			black	995060

QuikDraw™ + RAP = QuikDraw™ RAP Complete



WHITE **BLACK**

Complete Extra Small	995011	995010
Complete Small	995021	995020
Complete Medium	995031	995030
Complete Large	995041	995040
Complete Extra Large	995051	995050
Complete Extra Extra Large	995061	995060

Accessories



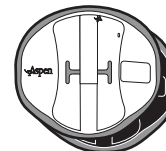
Regular Anterior Panel

REF - 993100 (White)

REF - 993200 (Black)

Regular RAP Pad

REF - 993110



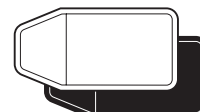
Large Anterior Panel

REF - 993101 (White)

REF - 993201 (Black)

Large RAP Pad

REF - 993111



Extension Panel

REF - 993060 (White)

REF - 993061 (Black)

Cold Gel Pack

Cold Therapy Gel Pack

REF - 993005